



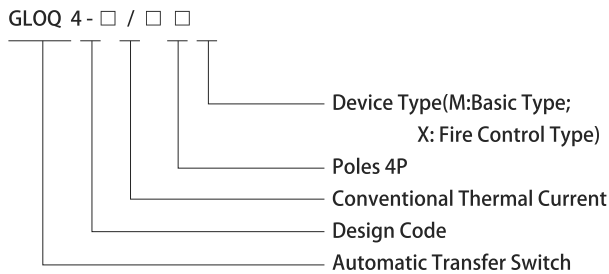
## GLOQ4 Series Dual Power Automatic Transfer Switch



### Product features

- ◆ GLOQ4-125~630A dual power automatic transfer switch(abbreviated as ATS)is suitable for AC 50/60Hz, AC rated voltage to 400V or under. Rated current 125-630A is suitable for the mutual conversion of two power supply of emergency power supply system during the power exchange.
- ◆ Power is interrupted to the load during power change.
- ◆ The switch works reliably under the following conditions:
- ◆ Altitude does not exceed 2000 meter;
- ◆ Ambient temperature is not higher than +40℃ ,not lower than -5℃ ;
- ◆ Relative humidity of air is not over 95%;
- ◆ No explosive medium, and the medium does not have enough gas and dust to corrode metals and destroy insulation.
- ◆ No significant shake or shock
- ◆ No rain or snow attack
- ◆ Note: If the expected ambient temperature is higher than +45 or at -5℃ ~-45℃ , It should be explained to the manufacturer.

## Model and meaning



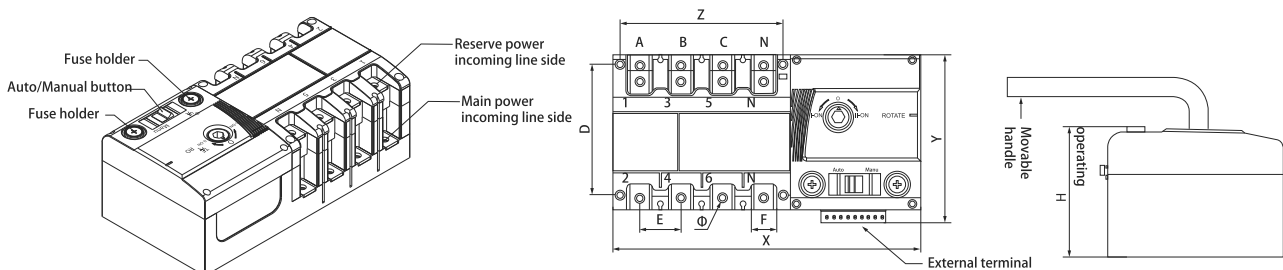
## Structure and features

- ◆ Structure :  
The switch is composed of DMC unsaturated polyester shell, permanent magnet synchronous motor, transmission mechanism and spring energy storage acceleration mechanism.
- ◆ Features :  
The Switch has two operation functions  
Operation by handle  
Operation Automatically  
The switch has three status Position I-O-II

## The main technical parameters

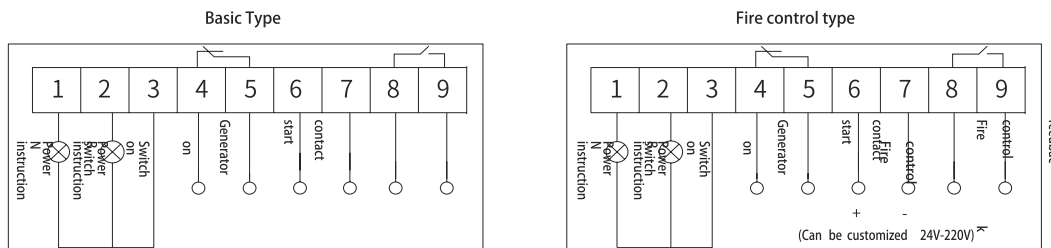
Type	GLOQ4-125	GLOQ4-250	GLOQ4-800
Rated current(A)	16,20,25,32,40,63,80,100,125	125,160,200,250	315,400,500,630,700,800
Rated insulation withstand voltage(V)	800	800	800
Rated impulse withstand voltage(kV)	8	8	8
Mechanical life	10000	10000	5000
Use category	AC-33iB	AC-33iB	AC-33iB

## Outline installation dimension drawing(Size units:mm)



Specification	X	Y	Z	D	E	F	H	Φ
GLOQ4-125	224	122	118.5	95.5	30	18	83	6
GLOQ4-250	300	153	287	128	36	23	122	8
GLOQ4-800	432	257	410	218	58	44	195	12

## Secondary wiring diagram



- (1) Manual, automatic button: control switch internal control circuit power, When automatic is selected, the switch automatically transfer When manual is selected, the switch can only be operated by the handle
- (2) Operating handle: When use the switch with the operating handle, the button must be in manual mode.
- (3) Position indication: surface switch working status position.
- (4) Switch body: the front part is the II#, connected to the "Reserve power supply"; the rear part is the I #, connected to the "Normal power supply".



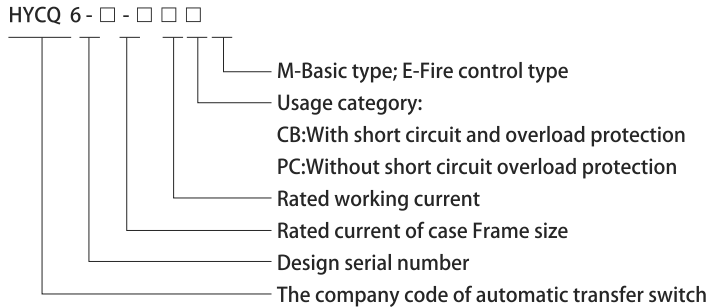
## HYCQ6 Series Dual Power Automatic Transfer Switch



### Main uses

- ◆ HYCQ6 is terminal type automatic transfer device. It's suitable for 3 phases 4 wires (or 1 phase 1wire) dual power grid with AC 50/60Hz, rated voltage 400V/230V and rated current up to 250A. When one power goes wrong it will automatic connect one or several load circuits from one power to the other power automatically, to ensure normal power supply of load circuits.
- ◆ The automatic transfer switch conforms to IEC60947-6-1 and GB/T14048.11.
- ◆ Normal conditions for operation and installation:
- ◆ Environmental Temperature Condition:-5~+40°C ;
- ◆ Installation site is not more than 2000 meters above sea level;
- ◆ PollutionLevel: Grade 3;
- ◆ Installation category: III ;
- ◆ Vertical installation or horizontal installation.

## Model and meaning



## Structure and features

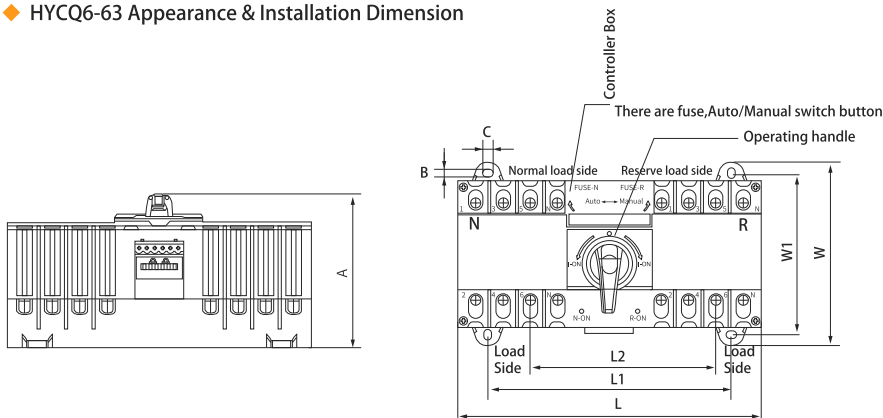
- ◆ The working voltage is 220V of switch controller
- ◆ The switch mechanical life(N-R-N circulation)is 5000 times
- ◆ The switch has operating handle, as emergency manual operating switch using. (using in the condition of blackout)
- ◆ It has three steady working states:  
State 1: Normal power switch on, Reserve power off;  
State 2: Normal power switch off, Reserve power on;  
State 3: Normal power off, Reserve power off;  
Main structure's working principle;  
The main structures of switch as drawing 2 showing.

## The main technical parameters

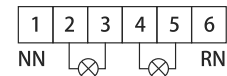
Type	HYCQ6-63	HYCQ6-125	HYCQ6-250
Rated Current Ie(A)	6,10,16,20,25,32,40,50,63	100,125	225, 250
Electrical Appliances Class	CB Class		
Use Category	AC~33iB		
Tripping Current	5~101n(C Type), 10~151n(D Type)		
Rated voltage Ue	220V(2P) 、400V(3P、4P)		
Rated frequency	50Hz		
Rated short circuit connecting ability Icm (Peak)	7.65kA	17kA	25kA
Rated short circuit breaking ability Icn (effective value)	5kA	10kA	12kA

## Appearance & installation dimension

- ◆ HYCQ6-63 Appearance & Installation Dimension



## Terminal wiring diagram

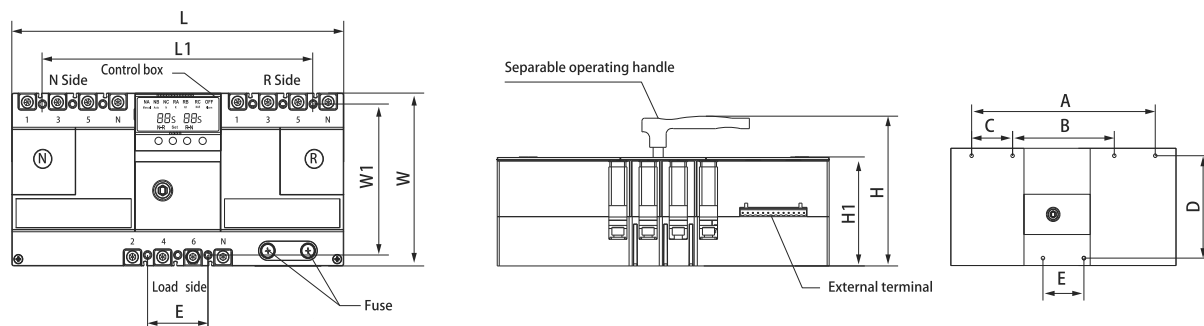


NN Normal null line(3P)  
RN Reserve null line(3P)  
L1 Normal on instructions(active220V)  
L2 Reserve on instructions(active220V)

Type	A	B	C	L	L1	L2	W	W1
HYCQ6-63	100	5	7	200(4P) 128(2P)	160(4P) 88(2P)	121.5	120	105

## Appearance & installation dimension

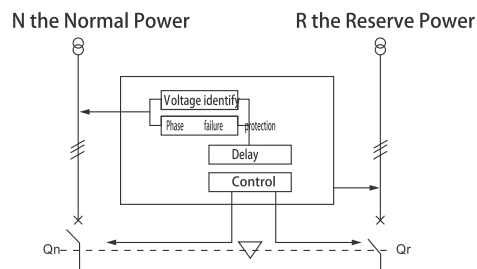
### ◆ HYCQ6-125-250 Appearance & Installation Dimension



Type	A	B	C	D	E	L	L1	W	W1	H	H1
HYCQ6-125	269	149	60.5	144	60	330	269	165	144	172	105
HYCQ6-250	298	158	70	165.5	70	370	298	190	165	172	105

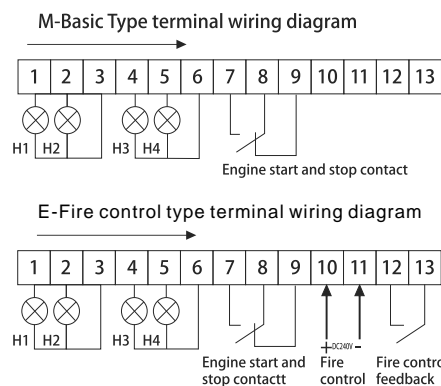
### HYCQ6-125-250 Appearance & installation dimension

- ◆ When the normal power supply fails(loss of voltage, undervoltage, phase failure), the load is switched from the normal power supply to the reserve power supply within a certain time, and when the normal power supply returns to normal, the load is switched back to the normal power supply.



### HYCQ6-125-250 Terminal wiring diagram

- ◆ Dual power automatic transfer switch is consist of 4 pole normal and reserve circuit breaker. switch has auto and manual operation, and can realize manually forcibly transfer with load within two powers.can two lines power auto forced transfer load. According to user requirements, normal power signal, norma power switch on signal, reserve power signal, reserve power switch on signal(customer can choose AD1 AC220V signal lamp to indicate at outside of cabinet), also has external port of generator start and stop, fire control signal and fire control feedback signal



H1 is External Indication of Normal Power  
H2 is External Indication of Normal Power Switch on  
H3 is External Indication of Reserve Power  
H4 is External Indication of Reserve Power Switch on